

Family Support Programs

Instructions on Completing Support
Programs the 2015 Interim Report in
EFIS 2.0

Purpose

The Interim Report submission for Family Support Programs serves to identify the level of services provided and the associated expenditures and revenues for the current fiscal year, as follows:

- **Interim Actuals** – Actual service levels, expenditures and revenue allocations from January 1, 2015 to June 30, 2015
- **Projections** – Projected service levels, expenditures and revenue allocations from July 1, 2015 to December 31, 2015



Layout of the Interim Report Application

As you navigate through the Interim Report application (previously known as the Revised Estimates application) in EFIS 2.0, the following approach is reflected by three different tabs within each form to calculate the interim report estimates targets, expenditures and allocations:

The screenshot shows the 'Task List Status' form in the EFIS 2.0 application. The form has three tabs: 'Data Elements - Interim Actuals', 'Data Elements - Projections', and 'Data Elements'. The 'Data Elements - Interim Actuals' tab is selected. Below the screenshot is a diagram showing the calculation: 'Interim Actuals' + 'Projections' = 'Total for Interim Report'. Red arrows point from the 'Data Elements - Interim Actuals' and 'Data Elements - Projections' tabs to the 'Interim Actuals' and 'Projections' boxes in the diagram, respectively. A red arrow also points from the 'Data Elements' tab to the 'Total for Interim Report' box.

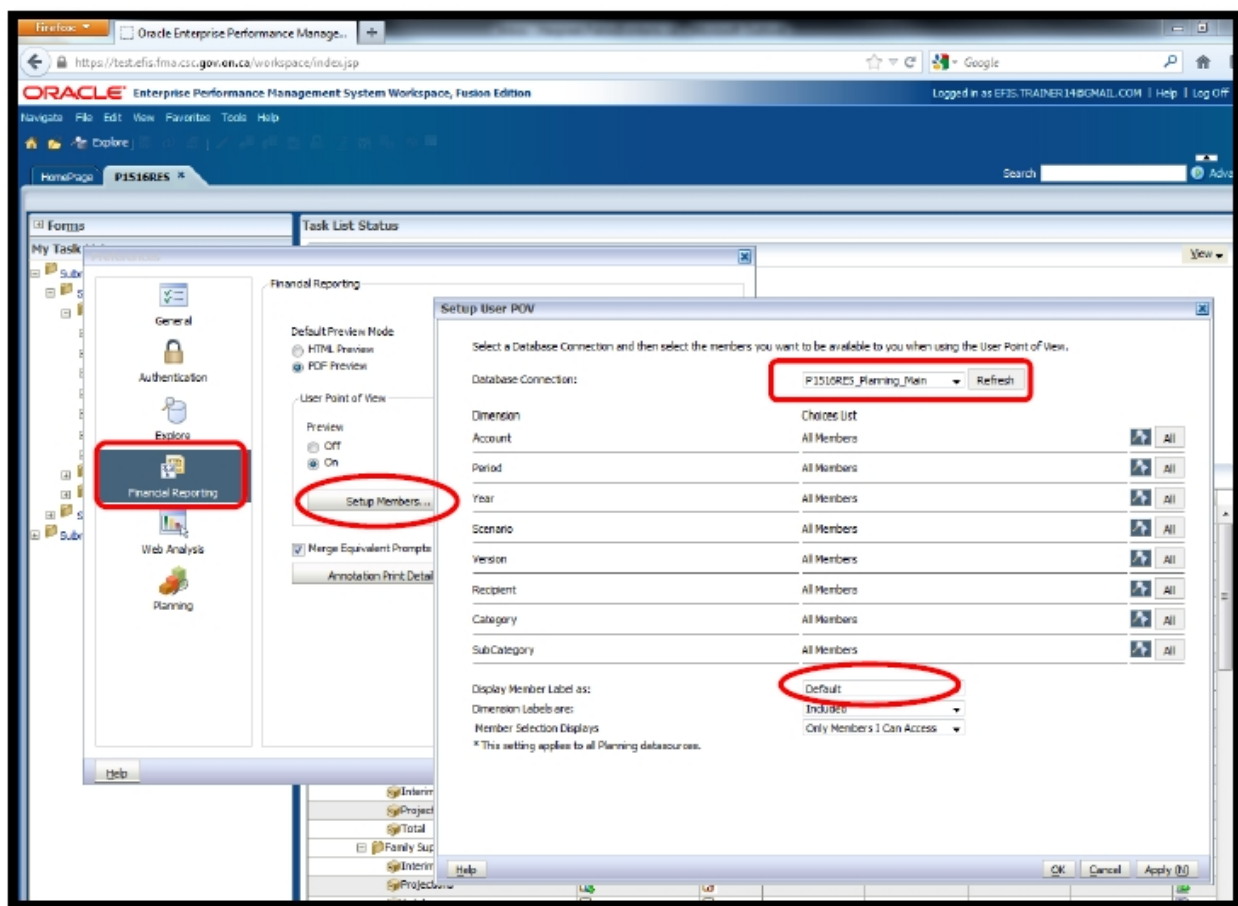
To Start

Please log into EFIS 2.0 with your user ID log-in information (it is the same log-in information for child care purposes).

Once you have successfully entered into EFIS 2.0, please select the correct Interim Report application for the Family Support Programs: **P1516RES**.

Once the correct application has been selected, please note that **at the start of each new reporting cycle** in EFIS 2.0, a one-time set up process is required prior to commencing your reporting.

1. Under FILE → Select Preferences
2. Select Financial Reporting → Click Setup Members
3. Select the correct reporting application from the “Database Connection” drop down menu
4. Using the drop down menu, set the “Display Member Label as:” **DEFAULT**
5. Click on Apply and OK.



Please note that there are no file-naming requirements for submissions completed in EFIS 2.0. In order to submit your file, simply promote your “Recipient Working Version” to “Active” status. Refer to Step #9 for more details.

REPORTING IN EFIS 2.0

The Interim Report submission My Task List is broken down into the following categories:

Submission Inputs and Query

- **Inputs and Results:** This section is comprised of all of the schedules that must be completed to file the submission to the Ministry
- **Reports:** Selecting a report allows you to print schedules, export data to excel, and save schedules as PDF files in a report format.
- **Validating Forms:** Validation formats are summarized for each schedule; each cell within a schedule is defined by the allowable inputs for the relevant schedule.

Submission Management

- **Version Description and Summary:** This area lists all of the different versions of the file and the applicable notes.
- **Copy Data to Recipient FA Viewable Version:** This form allows you to copy your submission so that your Financial Analyst (FA) can view your submission.
- **Flag Submission for Approval:** The submission must be flagged to enable the approval.
- **Validate and Promote for Approval:** All entered data in the submission is validated and once all errors and warning are corrected, the file is ready for approval.

INPUTS & RESULTS: SUGGESTED ORDER OF ENTRY

It is recommended that the Interim Report submission is completed in the order in which the schedules are listed under the “Input and Results” section. Specifically, start with the first schedule: Data Elements, Operational Support – Program Staff, Administration - Program Staff, Expenditures, etc. **Also, please ensure that the “Guideline Adherence Confirmation Schedule” is completed.** Once all the schedules have been finalized, print both the Certificate and Entitlement Page from the “Reports” section,

sign, and send them to the Ministry (by regular mail or by e-mailing scanned copies to childcarefunding@ontario.ca).

Step #1 Data Elements

PURPOSE

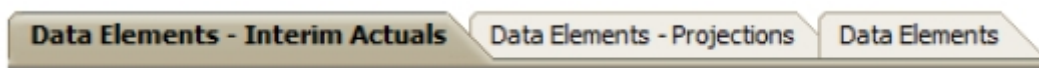
The Data Elements schedule captures information on data elements related to Family Support Programs (FSPs).

HOW TO COMPLETE

In EFIS 2.0, under SUBMISSION INPUT AND QUERY → INPUT AND RESULTS, select:

“Data Elements”

The “Data Elements” schedule is divided into the following three tabs:



- **Data Elements – Interim Actuals:** Report actuals for the 6 month period from January 1, 2015 to June 30, 2015
- **Data Elements – Projections:** Report projections for the 6-month period from July 1, 2015 to December 31, 2015
- **Data Elements:** Automatically calculates the total of Interim Actuals and Projections for the Fiscal Period January 1, 2015 to December 31, 2015

In both the Interim Actuals and Projections tabs, report applicable service levels for the Family Support Program provided by your entity:

- Visits Made by Parents or Caregivers
- Parents or Caregivers served
- Visits Made by Children
- Children Served
- Professionals in Workshops or Seminars
- Referrals
- Protocols or Official Linkages

- Parents or Caregivers in Workshops or Seminars
- Hours of Training, Workshops, Media Events or Conferences
- Programs FTEs

*(Please enter **only the FTE for the DAC** associated with A466 – Data Analysis Coordinators; no other FTEs should be included here)*

***TIP!**

Data elements on this page are required to be entered with no decimal places. The exceptions to this rule are as follows:

- # FTE, # of hours of Training Workshops, Media Events or Conferences, allow for 2 decimal places.

Step #2 Operational Support – Program Staff

PURPOSE

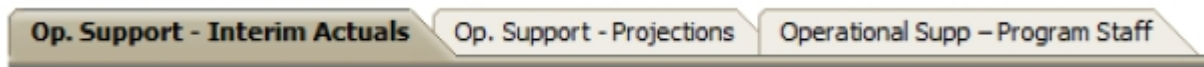
This schedule collects data regarding the number of staff, the full-time equivalency (FTE) of staff, as well as salaries and benefits of individuals who provide **operational support** to Family Support Programs.

HOW TO COMPLETE

Under **SUBMISSION INPUT AND QUERY** → **INPUT AND RESULTS**, select:

“Operational Support – Program Staff”

The “Operational Support – Program Staff” schedule is divided into the following three tabs:



- **Op. Support – Interim Actuals:** Report actuals for the 6 month period from January 1, 2015 to June 30, 2015
- **Op. Support – Projections:** Report projections for the 6-month period from July 1, 2015 to December 31, 2015
- **Operational Support – Program Staff:** Automatically calculates the total of Interim Actuals and Projections for the Fiscal Period January 1, 2015 to December 31, 2015

In both the Interim Actuals and Projections tabs, complete the following fields for each applicable Family Support Program provided by your entity:

- Description of Program Staff: Enter the Title/Position
- Number of Staff: Enter the number of individuals in the position(s) described
 - A **whole number** is required to designate an individual whether he/she is full-time or part-time
- **Full-Time Equivalency (FTE):**
 - Please see below for FTE calculation

FULL-TIME EQUIVALENCY (FTE) CALCULATION

$$= \frac{(\# \text{ hours worked during the year})}{\frac{35 \text{ hours}}{\text{week}} \times 52 \text{ weeks}}$$

For example, if a part-time staff works for 15 hours every week, the FTE = 0.43 FTE

$$\frac{(15 \text{ hours} \times 52 \text{ weeks})}{1820 \text{ hours}}$$

- **Salaries:**
 - Salaries include the following: payments to all full-time, part-time, temporary, occasional, summer or other employees. Included in this account line are premium pay, overtime pay, vacation pay, and other direct monetary compensation paid to employees. **Ensure that you have not included benefits in this column.**
- **Benefits (total per program for all staff listed):**
 - This line includes mandatory benefits (e.g. CPP, EI, and EHT), benefit plan costs (e.g. ADD, LTD, extended health, dental) as well as other benefits (e.g. WSIB, maternity top-up). **Benefits are reported in aggregate in the “Benefits Subtotal” column.**
- **Program Staff – Supply & Relief**
 - Enter the total sum of expenditures for supply and relief purposes for program staff. Examples of expenditures to be included in this line are wages for supply and relief staff.

In deciding if staff should be reported in this schedule or the “Administration – Program Staff” Schedule, ask yourself the following question:

“Would the position still exist if the Family Support Program closed?”

If the position would continue to exist, report the position in the “Administration – Program Staff” Schedule, otherwise report it here, in the “Operational Support - Program Staff” Schedule.

***TIP!**

An error message will result if the FTE of staff reported exceeds the number of staff entered, per line.

Please note that **ALL** error messages will need to be cleared in order to promote your submission to active.

HOW TO REPORT DATA IN STAFFING SCHEDULE FOR INTERIM ACTUALS (JANUARY 1, 2015 TO JUNE 30, 2015)

Consider the following scenario: You have 1 full-time salaried employee who earns \$60,000 a year. You also have 1 part-time hourly person who earns \$18 / hour who works 20 hours per week from January to June, then 30 hours per week from July to December.

| | # of Employees | FTE | Salaries |
|--------------------|----------------|-------------------|-----------------------|
| Full-time employee | 1 | 1.00 | \$30,000 ¹ |
| Part-time employee | 1 | 0.57 ² | \$9,360 ³ |

HOW TO REPORT DATA IN STAFF SCHEDULE FOR PROJECTIONS (JULY 1, 2015 TO DECEMBER 31, 2015)

Let's continue to use the example provided above: You still have 1 full-time salaried employee who earns \$60,000 a year. You also have 1 part-time hourly person who earns \$18 / hour who works 20 hours per week from January to June, then 30 hours per week from July to December.

| | # of Employees | FTE | Salaries |
|--------------------|----------------|-------------------|-----------------------|
| Full-time employee | 0 ⁴ | 1.00 | \$30,000 ⁵ |
| Part-time employee | 0 | 0.86 ⁶ | \$14,040 ⁷ |

FISCAL YEAR TOTAL (JANUARY 1, 2015 TO DECEMBER 31, 2015)

| Field Type | Calculation of Total (Fiscal Period) |
|------------|--|
| # | (# Jan to Jun) + (# Jul to Dec)* |
| FTE | (Jan to Jun FTE based on full year) + (Jul to Dec FTE based on full year) /2 |
| \$ | (\$ Jan to Jun) + (\$Jul to Dec) |

¹ Assuming Salaries are the same for all 6 months

² 20 hrs per week ÷ 35 hrs per week

³ 20 hrs x \$18/hr x 26 weeks

⁴ 0 is reported as the employees were already counted in the January - June section. Projections are only used for NET NEW staff from July to December.

⁵ Assuming Salaries are the same for all 6 months

⁶ 30 hrs per week ÷ 35 hrs per week

⁷ 30 hrs x \$18/hr x 26 weeks

** Ensure that the July to December numbers only represent net new numbers, otherwise they will be double-counted.*

You should review the numbers reported on this tab to ensure that the total numbers reflect what you expected from your data entry in Tabs 2 and 3.

Step #3 Administration – Program Staff

PURPOSE

This schedule collects data regarding the number of staff, the full-time equivalency (FTE) of staff, as well as salaries and benefits of individuals who provide **administrative support** to Family Support Programs.

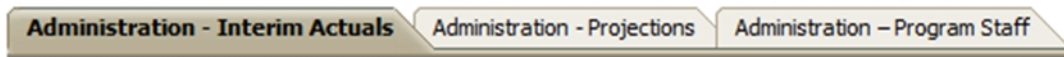
Any administration costs that can logically be assigned to administering Family Support Programs are considered administration costs. This is the schedule where staffing charge backs from central departments (e.g. IT, HR, Finance, etc.) should be included. Where possible, the number of staff and FTE for these charge back costs should also be provided in this schedule.

HOW TO COMPLETE

Under **SUBMISSION INPUT AND QUERY → INPUT AND RESULTS**, select:

“Administration – Program Staff”

Please follow the same steps as those identified in Step #2 (on page 5) to report the Interim Actuals and Projections for the number of staff, the full-time equivalency and the salary and benefit costs.



In deciding if the staffing should be reported in this schedule or the **“Operation Support – Program Staff”** Schedule, ask the following question:

“Would the position still exist if the Family Support Program closed?”

If the position would continue to exist, report the position in this schedule.

***TIP!**

- An error message will result if the FTE of staff reported exceeds the number of staff entered, per line.
- Please note that ALL error messages will need to be cleared in order to promote your submission to active.

Step #4 Expenditures

PURPOSE

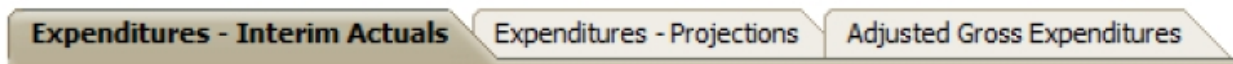
This schedule captures information on gross expenditures and revenue streams for Family Support Programs (FSP) by detail code.

HOW TO COMPLETE

Under **SUBMISSION INPUT AND QUERY → INPUT AND RESULTS**, select:

“Expenditures”

The “Expenditures” schedule is divided into the following three tabs:



- **Expenditures – Interim Actuals:** Report actuals for the 6 month period from January 1, 2015 to June 30, 2015)
- **Expenditures – Projections:** Report projections for the 6-month period from July 1, 2015 to December 31, 2015
- **Adjusted Gross Expenditures:** Automatically calculates the total of Interim Actuals and Projections for the Fiscal Period January 1, 2015 to December 31, 2015

Within each tab, the “Expenditures” schedule is broken down into three sections as follows:

- **Section 1: Operational Expenses**
- **Section 2: Administration Expenses**
- **Section 3: Offsetting Revenue**

The sections are further broken down into different categories. In both the Interim Actuals and Projections tabs, report expenditures in the appropriate categories for each applicable Family Support Program provided by your entity.

Gross Expenditures

Gross expenditures are defined as **total expenses** regardless of whether the funding is provided by the Ministry, municipal contributions, or other offsetting revenues. All

expenditures for Family Support Programs, ***irrespective of the funding source***, must be included in the interim actuals and projections.

Salaries and Benefits Note:

The administrative salaries are carried over from the “Administration – Program Staff” Schedule. The “Operational Support – Program Staff” salaries must be inputted in this schedule.

The sum of the following rows should equal the Program Staff Total found on the “Operational Support – Program Staff” Schedule:

- Salaries & Benefits – Line Personnel , and
- Salaries & Benefits – Management and Operational Support

Administration Note:

The 10% limit on the administration expenses for the Family Support Programs is calculated after applying the other Administration offsetting revenues to the Administration expenses.

Reporting on Expenses Note:

Ministry of Education has undertaken a modified status-quo approach for expenses reporting. As such, for consistency purposes, the entities are required to follow the prior guidelines when deciding which line to report certain expenses. For further questions, please contact your Financial Analyst.

*A **warning message** will appear in the Warnings page if expenses are reported under a program that has no allocation. You will still however be able to promote your submission to active with warning messages.

Step #5 Entitlement

PURPOSE

The Family Support Programs funding entitlement is calculated in this schedule. The levels of expenditures, cost sharing requirements and financial flexibility as per the policies set out in the Ontario Child Care Service Management Funding Guideline – 2015, are all taken into consideration when calculating the entitlement.

This schedule consists of 3 sections: Full Flexibility Entitlements, Limited Flexibility Entitlements and No Flexibility Entitlements

HOW TO COMPLETE

Under **SUBMISSION INPUT AND QUERY → INPUT AND RESULTS**, select:

“Entitlement”

There is no data entry required for this schedule as all the required data has been pre-loaded or is derived from the totals (sum of interim actuals and projections) of other schedules within the submission. The allocation for the Family Support Programs should be checked against Schedule B of your signed Service Agreement. Expenses found in this schedule are pulled from the Adjusted Gross Expenditures (total of interim actuals and projections) of the Expenditure Schedule of this submission.

Section 1 – Full Flexibility Entitlements calculates the entitlement for the 3 detail codes that have full financial flexibility (**A462 – OEYCs, A466 – DACs, A525 – ECD Planning**)

- The entitlements for these detail codes are calculated as the **lesser of the allocation and the respective adjusted gross expenditures** presented in the Expenditures Schedule.
- Any aggregate surplus of unused allocation from this section can be applied to Section 2 – **Limited Flexibility Entitlements**, only if there is an allocation in Section 2.
- The application of the flexibility is shown in the “Application of Flexibility” column.

Section 2 - Limited Flexibility Entitlements calculates the entitlement for the **A525 – ECD - Aboriginal allocation**, which has exception to full financial flexibility.

- The entitlement for this detail code is calculated as the lesser of the allocation and the adjusted gross expenditures presented in the Expenditures Schedule.

Section 3 – No Flexibility Entitlements calculates the entitlement for the 3 detail codes that have no flexibility (A386 – Delivery Agent, Resource Centres, A520 – Better Beginnings Better Futures, and A386 – TWOMO)

- TWOMO is a claims-based program; the TWOMO entitlement is calculated as the greater of the allocation and the TWOMO amount reported in the Expenditures Schedule.

Step #6 Guideline Adherence

PURPOSE

This section requires that your entity attest that it is in compliance with the service agreement in effect with the Ministry. Your entity must also attest that the actual and projected expenditures have been and will be used for supporting Family Support Programs as detailed in this submission.

HOW TO COMPLETE

Under **SUBMISSION INPUT AND QUERY → INPUT AND RESULTS**, select:

“Guideline Adherence”

- Please read the warning on guideline adherence and confirm whether or not your submission is in compliance by selecting “YES” or “NO”. A selection must be made in order to promote your file to active status.

The screenshot shows a web form titled "Warning on Guideline Adherence". It contains several text input fields for descriptions in English and French, and a dropdown menu for "Guideline Adherence Confirmation". A red circle highlights the dropdown arrow, and a red rectangle highlights the dropdown menu options: "No / Non" and "Yes / Oui". Below the main form is a "Contact Person" section with fields for Name and Title.

| Warning on Guideline Adherence | |
|----------------------------------|---|
| Description - English | I hereby attest that we are in compliance with the service agreement in effect between the Recipient and ... |
| Description - French | FR_I hereby attest that we are in compliance with the service agreement in effect between the Recipient and ... |
| . | . |
| Guideline Adherence Confirmation | [Dropdown Menu] |

| Contact Person | |
|----------------|-----|
| Name | ... |
| Title | ... |

- Next, please enter under “Contact Person” the contact information of the individual who is best able to answer any questions in regards to the information entered in this submission. Should your Financial Analyst have any questions pertaining to this submission, this is the person your Financial Analyst will be contacting.
- Under “Signing Authorities 1” and “Signing Authorities 2”, enter the contact information of 2 individuals who have the authority within your entity to bind the financial information entered in this EFIS submission to the Ministry. Examples of signing authorities are, Manager of Finance, Finance Director, Council Member, member of the Board of Directors, President, etc.

Step #7 Errors and Warnings

PURPOSE

This section of the Financial Statements Submission has been created in order to streamline the review procedures that are performed by the Ministry's Financial Analysts during the review process. By including them in the submission document set, your entity has the ability to correct any inconsistencies prior to activating the submission. This will expedite the Ministry's review process and minimize the number of queries that will require follow-up with your entity.

HOW TO COMPLETE

Under **SUBMISSION INPUT AND QUERY → INPUT AND RESULTS**, select:

“Errors and Warnings”

- Select “Warnings” and follow-up on all items where a “YES” cell is highlighted in red and provide an explanation in the Warning Explanation column in order to promote the file to active.
- Select “Errors” and if there is a “YES” cell highlighted in red at the top, there is an error that must be cleared within the submission. Please identify the error listed in this schedule and correct the error by referring back to the specific schedule. A definition of the error is provided in the description column.

***TIP!**

Your submission cannot be promoted to “ACTIVE” status until all ERROR messages have been addressed and cleared.

Step #8 Program Locations

PURPOSE

The Ministry of Education collects data in regards to where Family Support Programs are located throughout the province. There is no Program Location Schedule for the Interim Report submission. However, the completion of the Program Location Schedule will be required for the 2015 Financial Statement Submission.

Step #9 Submission Management

PURPOSE

The submission management area will allow you to validate your file and promote it for submission to the Ministry.

HOW TO COMPLETE

Under “**Submission Management**” select Submission Management and expand the folder by clicking on the “+” sign. The folder will expand and reveal 3 task boxes:

1. **Version Description and Summary:** This area allows you to manage the various versions of the file. Ensure the correct data is populated into the “Recipient Working Version” as this will be the file submitted to the Ministry. Enter a description to the Recipient Working Version by clicking on the field, entering text, and clicking the Save button.
2. **Copy Data to Recipient FA Viewable Version:** This process is optional and can be used if you need your Financial Analyst (FA) to review your data in the Recipient Working Version. It will copy all of your data from the “Recipient Working Version” into the “Recipient FA Viewable Version.” To complete this process, **choose ‘Yes’** from the drop down menu under “Are you sure you want to replace all data in FA Viewable Version?” and click the Save button.
3. **Flag Submission for Approval:** “YES” must be selected in the highlighted cell to answer the question “Are you sure you want to promote the current Submission for approval?” The current submission will be the “Recipient Working Version.”
4. **Validate and Promote for Approval:** The process to validate and promote submission for approval is as follows:
 - Click on the file name under the header: “Planning Unit”
 - Click on “Actions”
 - Select “Validate”; if the sub-status column shows “Invalid Data”, you must click on “Invalid Data” and correct the listed errors. If the sub-status column shows “Validated”, proceed to the next step

*****Please ensure that you click on the actual file name under “Planning Unit” and that it is physically selected.***

- Click on “Actions”

- Click on “Change Status” and select “**Promote**”
- Click on “Ok”
- The submission is promoted and flagged for the Approver. The file is now “read only” for the Modifier and the Modifier can no longer enter/edit data in the file.
- The **Approver** will then log into EFIS, review, and change the status to “Approve” in order to submit the EFIS file to the Ministry.

FSP Reporting

After completing steps # 1 – 9, the data in the Interim Report submission file should be complete.

You are now required to send in the following **REPORTS** (either hard copy or scanned copy) of the following sections of your **Active** 2015 Interim Report submission in EFIS 2.0:

- Signed Certificate; and
- Signed Schedule 3.1

*(To print the reports, under **SUBMISSION INPUT AND QUERY** → **REPORTS** and select the reports you wish to print.)*

***IMPORTANT!**

*The **REPORT** for the **ENTITLEMENT** Schedule 3.1 must be printed from the **ACTIVE** EFIS submission, and signed by 2 members of your entity who have signing authority.*

Please mail the relevant forms or scan and e-mail them, by **August 31, 2015** to:

Manager
Child Care Finance Unit
Financial Analysis & Accountability Branch
20th Floor, Mowat Block, 900 Bay Street
Toronto, Ontario
M7A 1L2

OR

childcarefunding@ontario.ca

* * * Once a submission is promoted to “Active” status, your entity has formally submitted their 2015 Interim Report - EFIS 2.0 file to the Ministry of Education.

FSP Assistance with EFIS 2.0

For **user and/or navigation assistance** on EFIS 2.0, please contact:

EFIS Technical Support

Tel: (416) 326-8307 | E-mail: EFIS.Support@ontario.ca

Ruby Hou - Tel: (416) 325-2052 | E-mail: Ruby.KexinHou@ontario.ca

Julie Ramsaran - Tel: (416) 325-2058 | E-mail: Julie.Ramsaran@ontario.ca

For log-in assistance, contact:

EFIS Technical Support - Tel: (416) 326-8307 / E-mail: EFIS.Support@ontario.ca

For data input assistance, please contact your Financial Analyst:

| Financial Analyst | Telephone # | E-mail Address |
|-------------------|----------------|--|
| Adrienne Han | (416) 212-9216 | Adrienne.Han@ontario.ca |
| Argen Elezi | (416) 326-5423 | Argen.Elezi@ontario.ca |
| Cheryl Chung | (416) 325-6235 | Cheryl.F.Chung@ontario.ca |
| Diana Facin | (416) 325-2054 | Diana.Facin@ontario.ca |
| Fiona Mak | (416) 325-5873 | Fiona.Mak@ontario.ca |
| Harpreet Pabla | (416) 212-4444 | Harpreet.Pabla@ontario.ca |
| Japneet Sidhu | (416) 212-8159 | Japneet.Sidhu@ontario.ca |
| Justin Leung | (416) 326-9667 | Justin.Leung@ontario.ca |
| Kiersten Lee | (416) 212-8410 | Kiersten.Lee@ontario.ca |